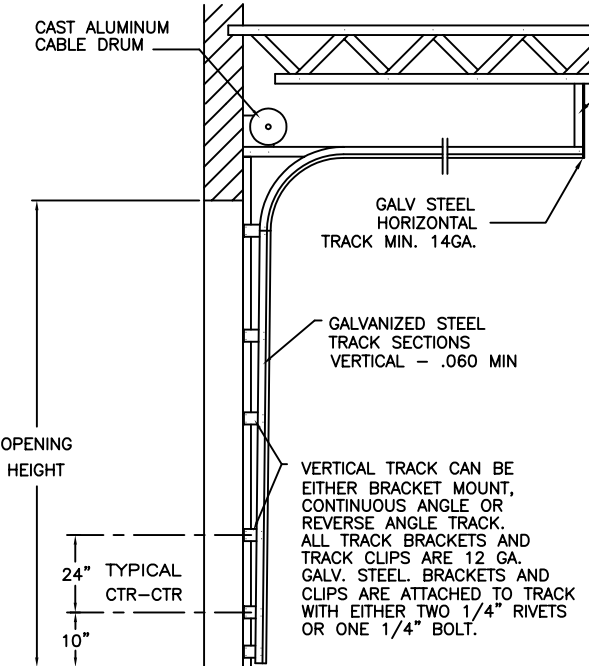


REVISIONS					
REV. NO.	ZONE:	DATE:	ECN NO.	APPVD:	DESCRIPTION
00	-	11/17/04	ER1073	SH	INITIAL RELEASE

HORIZONTAL TRACK END HANGER BRACKET (SUPPLIED BY DOOR INSTALLER) CLOSES ROLLER CHANNEL. INTERMEDIATE HANGER REQUIRED FOR DOORS IF HORIZONTAL TRACK DEFLECTION EXCEEDS 1/240TH OF THE DOOR HEIGHT

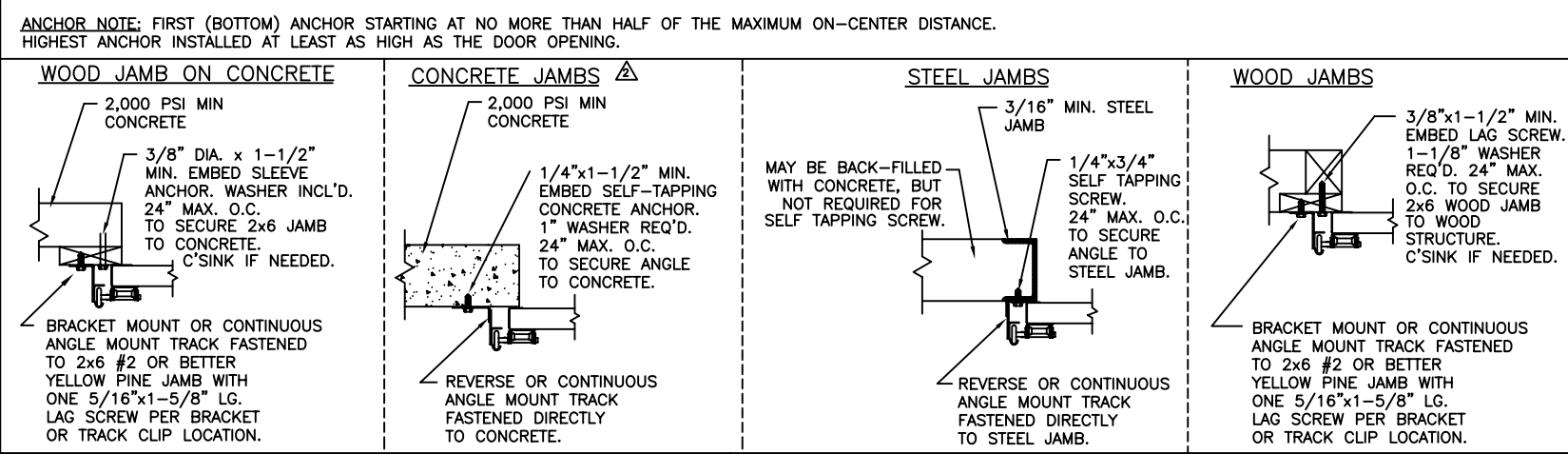
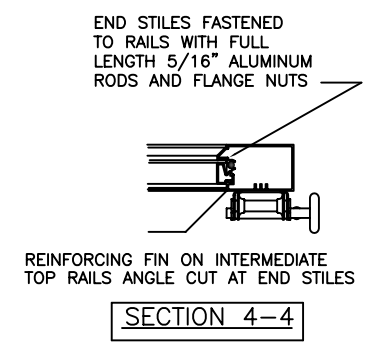
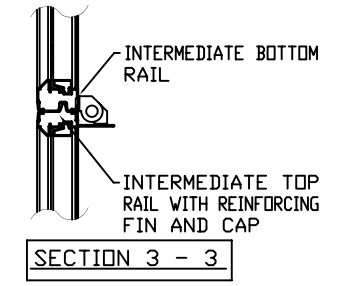
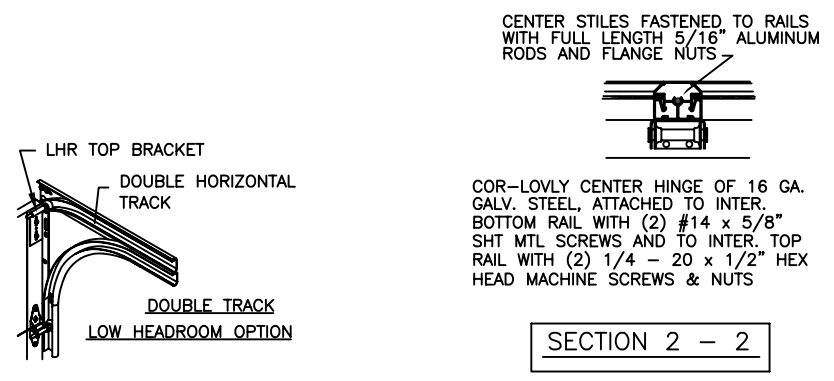
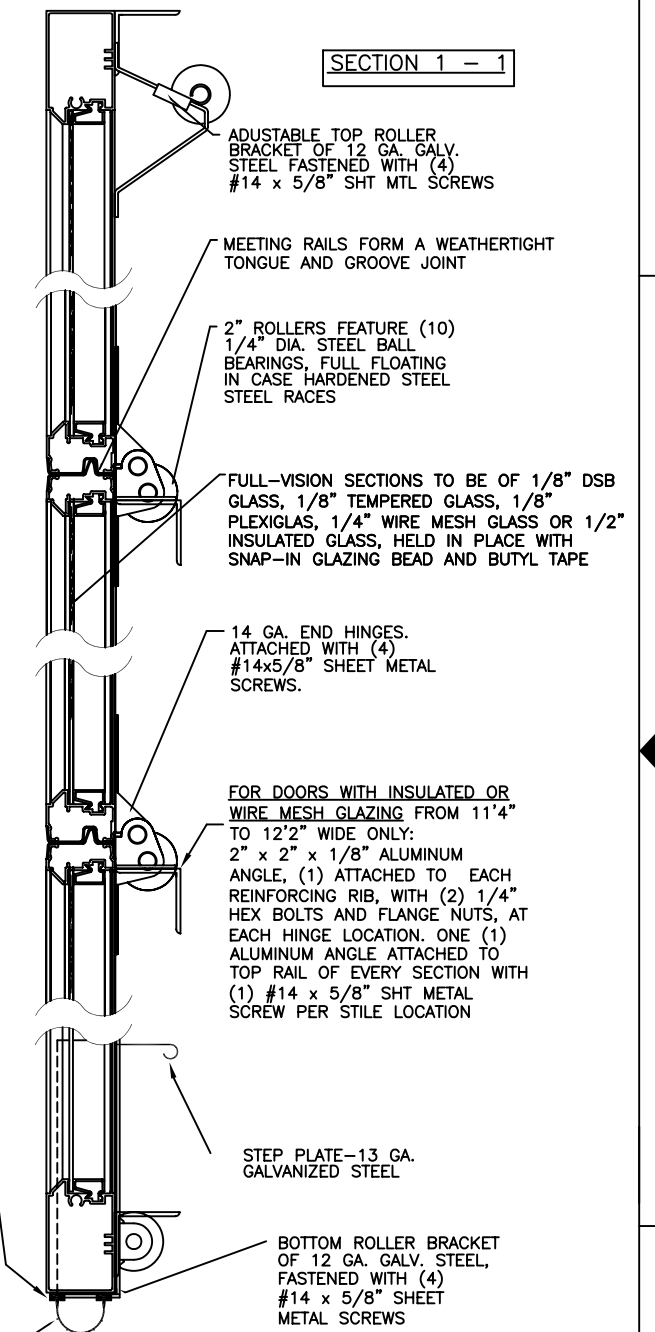
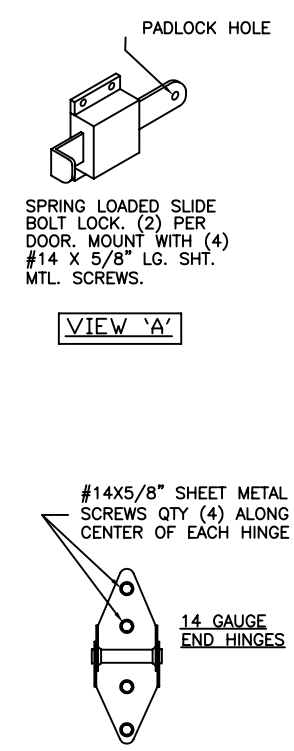
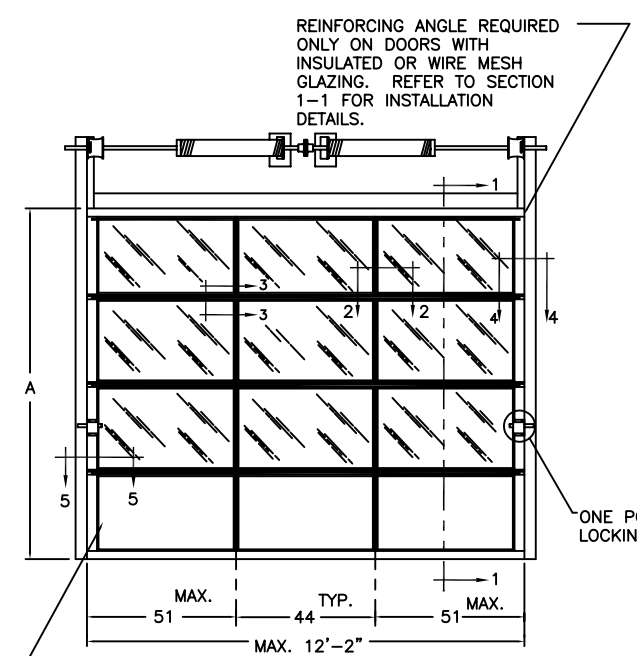


MODEL 902 / C2AL IS MADE OF 6063-T5 ALUMINUM EXTRUSIONS. WALL THICKNESS:  
 TOP & BOTTOM RAILS .075  
 INTER. TOP & BOTTOM RAILS .075  
 TOP HAS .1 x 1.875" FIN  
 INTER. TOP RAIL CAP .040  
 SINGLE & DOUBLE END STILES .075  
 CENTER STILES .062

VERTICAL TRACK CAN BE EITHER BRACKET MOUNT, CONTINUOUS ANGLE OR REVERSE ANGLE TRACK. ALL TRACK BRACKETS AND TRACK CLIPS ARE 12 GA. GALV. STEEL. BRACKETS AND CLIPS ARE ATTACHED TO TRACK WITH EITHER TWO 1/4" RIVETS OR ONE 1/4" BOLT.

**SIDE ELEVATION STANDARD-LIFT TRACK DETAILS**

NOTE: DOUBLE TRACK LOW HEADROOM, HI-LIFT TRACK, FOLLOW-THE-ROOF TRACK, AND VERTICAL LIFT TRACK ARE AVAILABLE OPTIONS.



THE DESIGN OF THE SUPPORTING STRUCTURAL ELEMENTS IS THE RESPONSIBILITY OF THE BUILDING ENGINEER OR ARCHITECT OF RECORD.

MARK WESTERFIELD, P.E.  
 FLORIDA P.E. #48495, NC P.E. #23832,  
 TEXAS P.E. #91513

ASTRAGAL TO BE 3 1/2" FLEXIBLE VINYL WITH RIBS

DESIGN LOADS: +16.5 PSF & -16.5 PSF  
 TEST LOADS: +25.0 PSF & -25.0 PSF

NOTICE: Confidential/Proprietary information of CLOPAY BUILDING PRODUCTS CO. is contained herein and may not be disclosed, used, duplicated, made available, or distributed without its prior consent. Failure to observe this notice may result in liability for any damages and losses resulting therefrom.

Unless Stated Otherwise TOLERANCES are  
 .0 = ±.03  
 .00 = ±.015  
 .000 = ±.005  
 .0000 = ±.001  
 Degrees = ±1/2"

**Glopay** Building Products Company  
 8585 Duke Boulevard  
 Mason, OH 45040  
 Tel. No. 1-513-381-4800  
 Fax No. 1-513-762-3519

DESCRIPTION: 902W1-12

DRAWN BY: DAS DATE: 5/28/03 SCALE: NTS

CHECKED BY: SH DATE: 08/28/03 SHEET 1 OF 1

DWG. NO.: 103291 REV. NO. 00

PART NO.: N/A

WINDLOAD RATING  
**W1**

DWG. **B**