

REVISIONS					
REV. NO.	ZONE:	DATE:	ECN NO.	APPVD:	DESCRIPTION
00	-	11/03/03	ER1037	SH	INITIAL RELEASE

HORIZONTAL TRACK END HANGER BRACKET (SUPPLIED BY DOOR INSTALLER) CLOSES ROLLER CHANNEL. INTERMEDIATE HANGER REQUIRED FOR DOORS 12'-0" AND HIGHER

12'-2" WIDE X 8'-0" THRU 18'-0" HIGH
CLOPAY MODELS 3602, 3603, 3622
IDEAL MODELS C6X17, COX17, C6X20

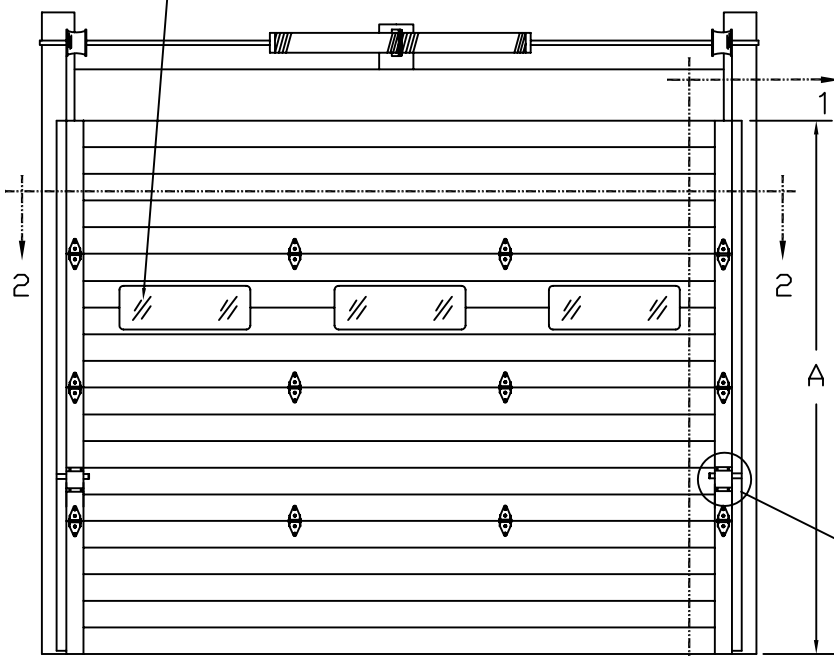
GALV STEEL TRACK SECTIONS-
HORIZONTAL - 0.075 MIN.

GALVANIZED STEEL TRACK SECTIONS
VERTICAL - .060 MIN

VERTICAL TRACK CAN BE EITHER BRACKET MOUNT, CONTINUOUS ANGLE OR REVERSE ANGLE TRACK. ALL TRACK BRACKETS AND TRACK CLIPS ARE 12 GA. GALV. STEEL. BRACKETS AND CLIPS ARE ATTACHED TO TRACK WITH EITHER TWO 1/4" RIVETS OR ONE 1/4" TRACK BOLT AND NUT

DOOR HEIGHT 'A'	NUMBER OF SECTIONS
8'-0"	4
8'-3" THRU 10'-0"	5
10'-3" THRU 12'-0"	6
12'-3" THRU 14'-0"	7
14'-3" THRU 16'-0"	8
16'-3" THRU 18'-0"	9

OPTIONAL WINDOW LITES AVAILABLE



SECTIONS ARE 1-3/4" (M/N: 3603, 3622, 46X17, 40X17) 2" (M/N: 3602, 46X20) THICK PANELS. EXTERIOR 20GA. (M/N: 3622, 40X17) 26 GA. (M/N: 3602, 3603, 46X20, 46X17) MIN. GALV. STEEL. INTERIOR 27 GA. MIN. GALV. STEEL. THE STUCCO EMBOSSED STEEL TEXTURE IS PREPAINTED WITH A BAKED POLYESTER PAINT. MINOR RIBS ARE PLACED EVERY 4 INCHES ALONG THE WIDTH OF THE EXTERIOR PANELS (M/N: 3602, 3603, 46X20, 46X17).

12 GA. GALV. STEEL TOP ROLLER BRACKET. EACH BRACKET ATTACHED W/(4) #14x5/8" SHEET METAL SCREWS. ADJUSTABLE SLIDE ATTACHED TO TOP BRACKET WITH (2) 1/4"x1/2" BOLTS AND NUTS PER BRACKET.

NO ADDITIONAL HORIZONTAL REINFORCEMENT ON THIS DOOR

URETHANE CORE DENSITY 2.5 P.C.F.

ONE POINT (MIN) LOCKING

INTERMEDIATE ROLLER HINGES. SEE HINGE DETAIL FOR SPECIFICATIONS.

12 GA. BOTTOM BRACKET FASTENED WITH QTY.(4) 1/4" X3/4" SELF TAPPING SCREWS.

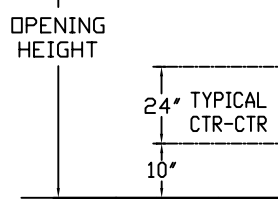
BOTTOM SECTION USES PLASTIC EXTRUDED RETAINER FOR FLEXIBLE VINYL ASTRAGAL

DESIGN LOADS: +13.5 & -13.5 PSF
TEST LOADS +20 & -20 PSF

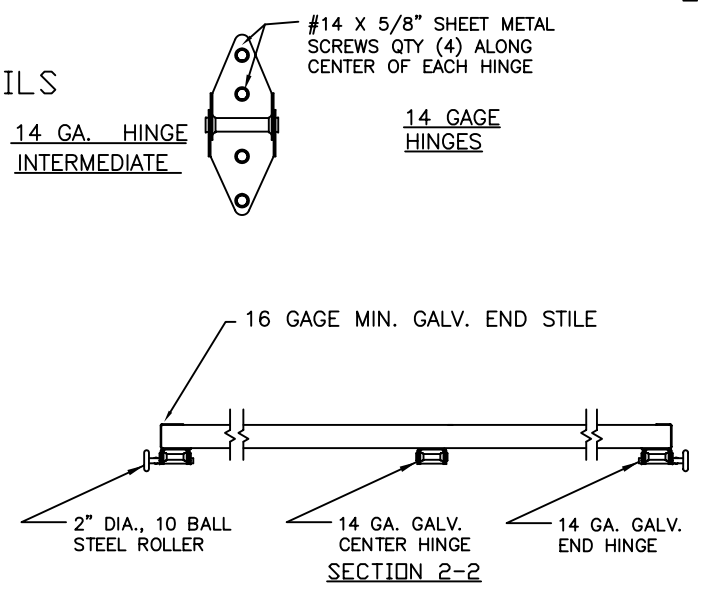
SECTION 1 - 1

DESIGN ENGINEER: MARK WESTERFIELD, P.E. FLORIDA P.E. #48495, NC P.E. #23832, TEXAS P.E. #91513 PART NO.: -

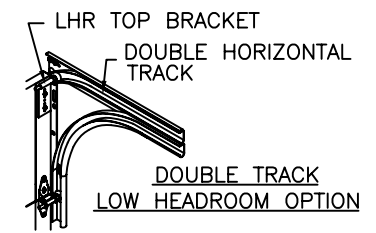
SIDE ELEVATION STANDARD-LIFT TRACK DETAILS



HINGE DETAIL



NOTE: DOUBLE TRACK LOW HEADROOM, HI-LIFT TRACK, FOLLOW-THE-ROOF TRACK, AND VERTICAL LIFT TRACK ARE AVAILABLE OPTIONS.



VERTICAL TRACK ATTACHMENT METHODS

VERTICAL 2" X 6" WOOD JAMB ON WOOD FRAME CONST.
OPTION 1 1-1/2" EMBED 3/8" X 3" LAG SCREWS ON 24" CENTERS. 1" O.D. MIN. WASHER REQUIRED. LAG SCREW MAY BE COUNTERSUNK 1/2" TO PROVIDE A FLUSH MOUNT IF REQUIRED.
OPTION 2. 16D X 3-1/2" COMMON WIRE NAILS ON 11" CENTERS. SPACE FIRST NAIL(BOTTOM) NOT LESS THAN 6" FROM END.

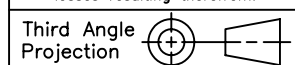
VERTICAL 2" X 6" JAMB ON MASONRY CONST.
OPTION 1. 2000 PSI CONCRETE 1/4" X 3" SELF TAPPING CONCRETE ANCHORS EMBED 1-1/2" INTO MASONRY AND 24" ON CENTER SPACING FIRST (BOTTOM) ANCHOR 6" FROM FLOOR.
3/8" X 3" SLEEVE ANCHOR 1-1/2" EMBED 24" ON CENTER SPACING. MINIMUM EDGE DISTANCE 3"
OPTION 2. GROUT FILLED CMU BLOCK 1/4" X 3" SELF TAPPING CONCRETE 1-1/2" EMBED ANCHORS 22" ON CENTER SPACING

VERTICAL JAMB STEEL FRAME CONST.
5/16" X 3/4" SELF TAPPING SCREWS MOUNT TRACK DIRECTLY TO 12 GAGE MIN. STEEL JAMBS. SPACING 24" ON CENTER. FIRST (BOTTOM) SCREW NO MORE THAN 6" FROM FLOOR.

THE DESIGN OF THE SUPPORTING STRUCTURAL ELEMENTS IS THE RESPONSIBILITY OF THE BUILDING ENGINEER OR ARCHITECT OF RECORD.

NOTICE: Confidential/Proprietary information of CLOPAY BUILDING PRODUCTS CO. is contained herein and may not be disclosed, used, duplicated, made available, or distributed without its prior consent. Failure to observe this notice may result in liability for any damages and losses resulting therefrom.

Unless Stated Otherwise TOLERANCES are
.0 = ±.031
.00 = ±.015
.000 = ±.005
.0000 = ±.001
Degrees = ±1/2"



Unless Stated Otherwise DIMENSIONS ARE IN INCHES.

Clopay Building Products Company
8585 Duke Boulevard
Mason, OH 45040 USA
Tel. No. 513-770-4800
Fax No. 513-770-4853

DESCRIPTION: MODEL 3603W1 12' WIDE			
DRAWN BY: RJK	DATE: 8/25/03	SCALE: N/A	DWG. B
CHECKED BY: SH	DATE: 08/28/03	SHEET 1 OF 1	SIZE B
DWG. NO.: 102968		REV. NO. 00	