

4

3

2

1

HEADROOM, HI-LIFT TRACK, FOLLOW-THE-ROOF TRACK, AND VERTICAL LIFT TRACK ARE AVAILABLE OPTIONS. 3" TRACK ALSO AVAILABLE.

10'-2" WIDE X 8'-0" THRU 18'-0" HIGH

REVISIONS					
REV. NO.	ZONE:	DATE:	ECN NO.	APPVD:	DESCRIPTION
00	-	11/03/03	ER1037	SH	INITIAL RELEASE

HORIZONTAL TRACK END HANGER BRACKET (SUPPLIED BY DOOR INSTALLER) CLOSES ROLLER CHANNEL. INTERMEDIATE HANGER REQUIRED FOR DOORS IF HORIZONTAL TRACK DEFLECTION EXCEEDS 1/240TH OF THE DOOR HEIGHT

25GA EXTERIOR SKIN

24GA EXTERIOR SKIN

NON-INSULATED MODELS:
MODELS 525W1, 225W1

VINYL BACKED INSULATION MODELS:
MODEL 525VW1

STEEL BACKED INSULATED MODELS:
MODELS 525SW1, 225SW1

NON-INSULATED MODELS:
MODELS 524W1, 224W1

VINYL BACKED INSULATION MODELS:
MODEL 524VW1

STEEL BACKED INSULATED MODELS:
MODELS 524SW1, 224SW1

SECTIONS ARE 1-7/8" THK PANELS ROLL FORMED OF .022" MIN. HOT DIPPED GALVANIZING, ROLL FORMED STEEL.

ADJUSTABLE TOP ROLLER BRACKET OF 12 GA. GALV. STEEL, INSTALLED ON DOOR WITH (4) #14 X 5/8" LG SHEET METAL SCREWS

D

D

C

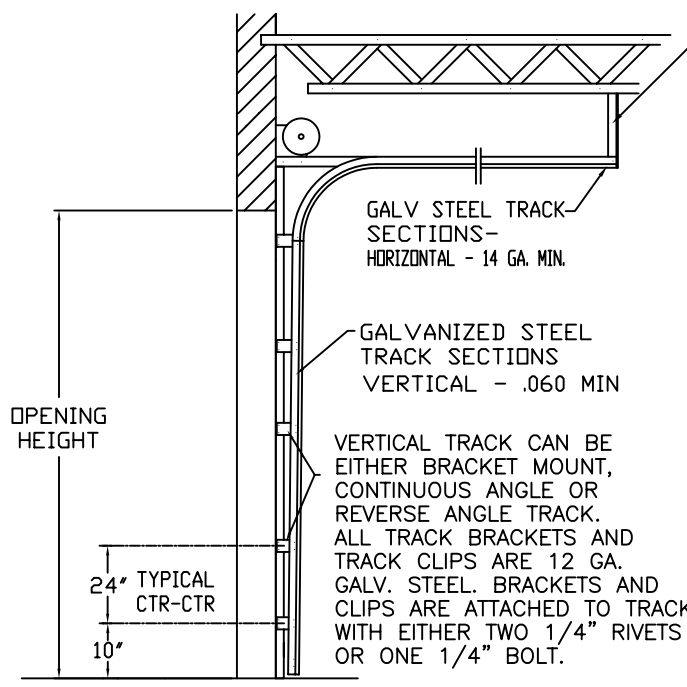
C

B

B

A

A

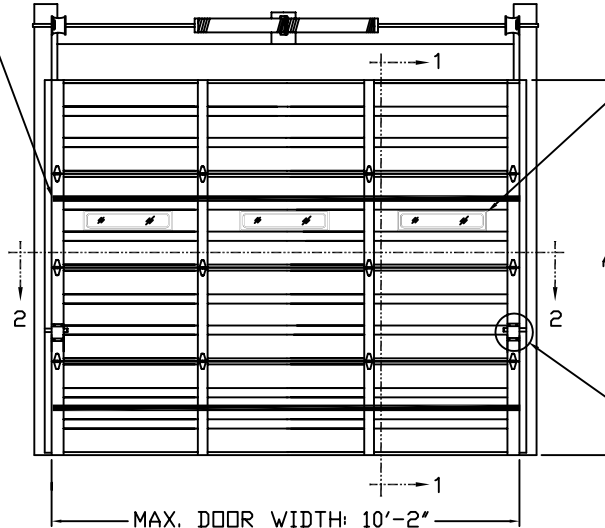


DOOR WIDTH	NUMBER OF CENTER STILES
UP TO 9'-2"	1
9'-3" THRU 10'-2"	2



OPTIONAL ALUMINUM FULL VISION WINDOW LITE SECTIONS AVAILABLE (1/8" DSB, 1/8" PLEXI, OR 1/4" WIRE) FULL VISION SECTIONS TO HAVE 2" X 2" X 1/8" L-ANGLE HORIZONTAL REINFORCEMENT. L-ANGLES ATTACHED TO THE REINFORCING RIB WITH (2) 1/4"-20 X 5/8" HEX HEAD BOLTS AND NUTS AT EVERY HINGE LOCATION.

2-1/4" x 24 GA. GALV. STEEL U-BAR. ONE U-BAR ON EVERY OTHER SECTION FROM BOTTOM U-BARS ATTACHED AT EACH STILE LOCATION WITH (2) 1/4" x 3/4" SELF-TAPPING SCREWS



OPTIONAL INSULATION (SEE MODEL EXPLANATION)

OPTIONAL 24" x 6" POLYPROPYLENE SCREW TOGETHER FRAME TYPE DSB OR 1/8" PLEXI WINDOW LITES AVAILABLE.

END ROLLER HINGES OF MIN. 14 GA. GALV. STEEL, FASTENED WITH (4) #14 X 5/8" LG. SHT. MTL. SCREWS AND (4) 1/4"x3/4" SELF-TAPPING SCREWS.

2" ROLLERS FEATURE (10) 1/4" DIA. STEEL BALL BEARINGS FULL FLOATING IN CASE HARDENED STEEL RACES

U-BARS MOUNTED ALONG CENTER OF SECTION

BOTTOM ROLLER BRACKET OF 13 GA. GALV. STEEL, FASTENED WITH (4) #14 X 5/8" LG SHT. MTL. SCREWS

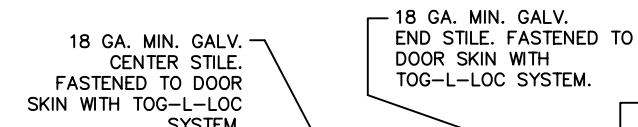
BOTTOM SECTION REINFORCED WITH TEMPERED ALUMINUM EXTRUSION WITH INTEGRAL RETAINER FOR FLEXIBLE VINYL ASTRAGAL

DESIGN LOADS: +13.5 & -13.5 P.S.F. TEST LOADS +20 & -20 P.S.F.

SECTION 1-1

PART NO.: N/A

SIDE ELEVATION STANDARD-LIFT TRACK DETAILS



DOOR HEIGHT 'A'	NUMBER OF SECTIONS
8'-0"	4
8'-3" THRU 10'-0"	5
10'-3" THRU 12'-0"	6
12'-3" THRU 14'-0"	7
14'-3" THRU 16'-0"	8
16'-3" THRU 18'-0"	9

#14 X 5/8" SHEET METAL SCREWS QTY (4) ALONG CENTER OF EACH HINGE

14 GAUGE CENTER HINGES

14 GA. GALV. CENTER HINGE FASTENED WITH (4) #14x5/8" SHEET METAL SCREWS.

VERTICAL TRACK ATTACHMENT METHODS

VERTICAL 2" X 6" WOOD JAMB ON WOOD FRAME CONST.

OPTION 1 1-1/2" EMBED 3/8" X 3" LAG SCREWS ON 24" CENTERS. 1" O.D. MIN. WASHER REQUIRED. LAG SCREW MAY BE COUNTERSUNK 1/4" TO PROVIDE A FLUSH MOUNT IF REQUIRED.

OPTION 2 16D X 3-1/2" COMMON WIRE NAILS ON 13" CENTERS. SPACE FIRST NAIL(BOTTOM) NOT LESS THAN 6" FROM END.

VERTICAL 2" X 6" JAMB ON MASONRY CONST.

OPTION 1 2000 PSI CONCRETE 1/2" X 3" SELF TAPPING CONCRETE ANCHORS EMBED 1-1/2" INTO MASONRY AND 24" ON CENTER SPACING. FIRST (BOTTOM) ANCHOR 6" FROM FLOOR.

3/8" X 3" SLEEVE ANCHOR 1-1/2" EMBED 24" ON CENTER SPACING. MINIMUM EDGE DISTANCE 3"

OPTION 2 GROUT FILLED CMU BLOCK 1/4" X 3" SELF TAPPING CONCRETE 1-1/2" EMBED ANCHORS 24" ON CENTER SPACING

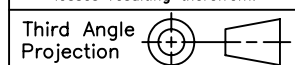
VERTICAL JAMB STEEL FRAME CONST.

5/16" X 3/4" SELF TAPPING SCREWS MOUNT TRACK DIRECTLY TO 12 GAGE MIN. STEEL JAMBS. SPACING 24" ON CENTER. FIRST (BOTTOM) SCREW NO MORE THAN 6" FROM FLOOR.

THE DESIGN OF THE SUPPORTING STRUCTURAL ELEMENTS IS THE RESPONSIBILITY OF THE BUILDING ENGINEER OR ARCHITECT OF RECORD.

MARK WESTERFIELD, P.E. FLORIDA P.E. #48495, NC P.E. #23832, TEXAS P.E. #91513

NOTICE: Confidential/Proprietary information of CLOPAY BUILDING PRODUCTS CO. is contained herein and may not be disclosed, used, duplicated, made available, or distributed without its prior consent. Failure to observe this notice may result in liability for any damages and losses resulting therefrom.



Unless Stated Otherwise TOLERANCES are

- .0 = ±.031
- .00 = ±.015
- .000 = ±.005
- .0000 = ±.001
- Degrees = ±1/2"

Unless Stated Otherwise DIMENSIONS ARE IN INCHES.

Glopay Building Products Company

8585 Duke Boulevard Mason, OH 45040 USA Tel. No. 513-770-4800 Fax No. 513-770-4853

DESCRIPTION: COMMERCIAL RIBBED DOOR, +/- 13.5 PSF DES. LOAD

DRAWN BY: RJK DATE: 08/20/03 SCALE: N/A DWG. B

CHECKED BY: SH DATE: 08/28/03 SHEET 1 OF 1 SIZE B

DWG. NO.: 102961 REV. NO. 00

4

3

2

1