

4 | 3 | 2 | 1

REVISIONS					
REV. NO.	ZONE:	DATE:	ECN NO.	APPVD:	DESCRIPTION
01	-	4/29/05	DR1125	SH	CORRECTION TO DRAWING NUMBER AND MODEL NUMBER

HORIZONTAL TRACK END HANGER BRACKET (SUPPLIED BY DOOR INSTALLER) CLOSES ROLLER CHANNEL. INTERMEDIATE HANGER REQUIRED FOR DOORS 12'-0" AND HIGHER

14'-2" WIDE X 8'-0" THRU 18'-0" HIGH
CLOPAY MODELS 3602, 3603, 3622
IDEAL MODELS C6X17, COX17, C6X20

SECTIONS ARE 1-3/4" (M/N: 3603, 3622, C6X17, COX17) 2" (M/N: 3602, C6X20) THICK PANELS. EXTERIOR 20GA. (M/N: 3622, COX17) 26 GA. (M/N: 3602, 3603, C6X20, C6X17) MIN. GALV. STEEL. INTERIOR 27 GA. MIN. GALV. STEEL. THE STUCCO EMBOSSED STEEL TEXTURE IS PREPAINTED WITH A BAKED POLYESTER PAINT. MINOR RIBS ARE PLACED EVERY 4 INCHES ALONG THE WIDTH OF THE EXTERIOR PANELS (M/N: 3602, 3603, C6X20, C6X17).

D

D

C

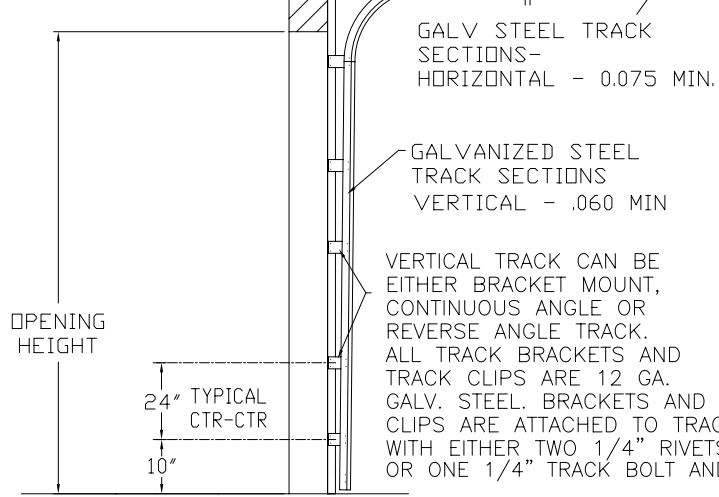
C

B

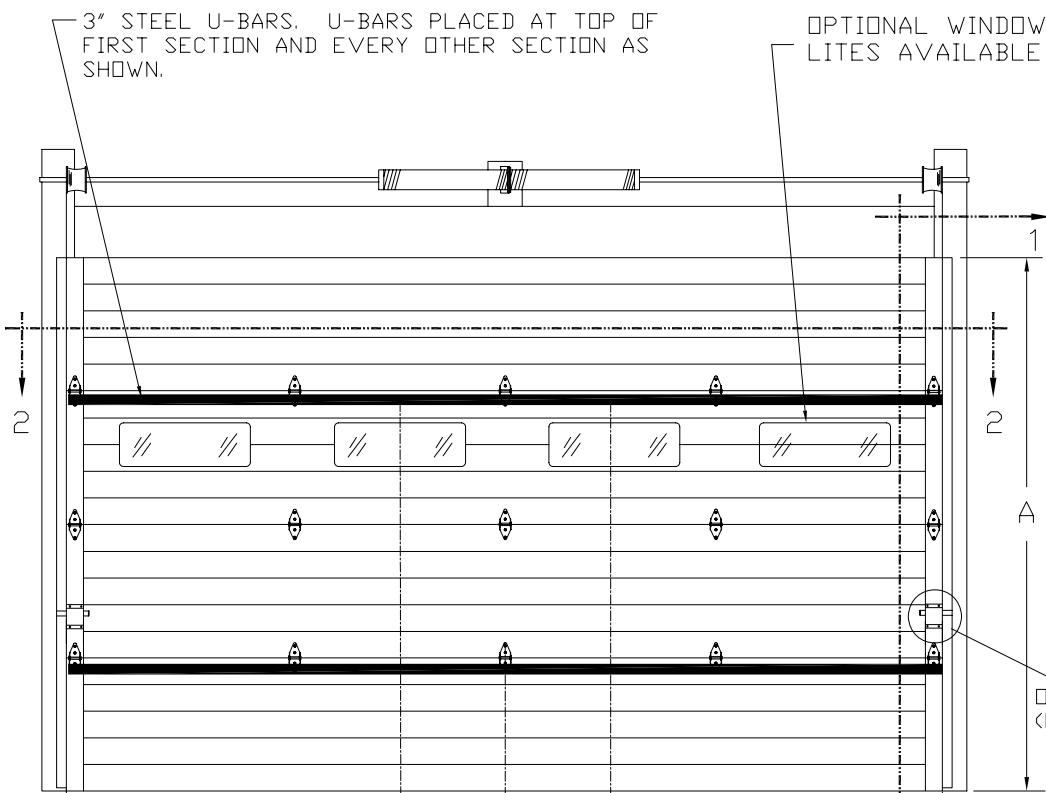
B

A

A

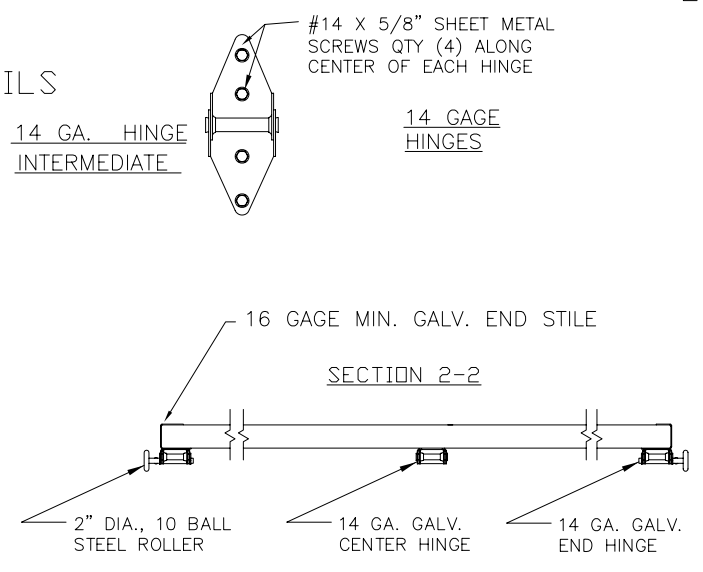


DOOR HEIGHT 'A'	NUMBER OF SECTIONS
8'-0"	4
8'-3" THRU 10'-0"	5
10'-3" THRU 12'-0"	6
12'-3" THRU 14'-0"	7
14'-3" THRU 16'-0"	8
16'-3" THRU 18'-0"	9

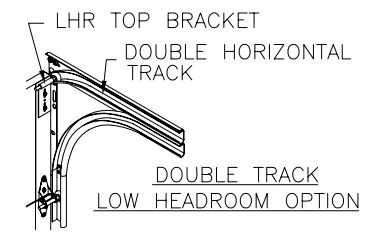


SIDE ELEVATION STANDARD-LIFT TRACK DETAILS

HINGE DETAIL



NOTE: DOUBLE TRACK LOW HEADROOM, HI-LIFT TRACK, FOLLOW-THE-ROOF TRACK, AND VERTICAL LIFT TRACK ARE AVAILABLE OPTIONS.



VERTICAL TRACK ATTACHMENT METHODS

VERTICAL 2" X 6" WOOD JAMB ON WOOD FRAME CONST.

OPTION 1 1-1/2" EMBED 3/8" X 3" LAG SCREWS ON 24" CENTERS. 1" O.D. MIN. WASHER REQUIRED. LAG SCREW MAY BE COUNTERSUNK 1/2" TO PROVIDE A FLUSH MOUNT IF REQUIRED.

OPTION 2. 16D X 3-1/2" COMMON WIRE NAILS ON 9" CENTERS. SPACE FIRST NAIL(BOTTOM) NOT LESS THAN 6" FROM END.

VERTICAL 2" X 6" JAMB ON MASONRY CONST.

OPTION 1. 2000 PSI CONCRETE 1/4" X 3" SELF TAPPING CONCRETE ANCHORS EMBED 1-1/2" INTO MASONRY AND 24" ON CENTER SPACING FIRST (BOTTOM) ANCHOR 6" FROM FLOOR.

3/8" X 3" SLEEVE ANCHOR 1-1/2" EMBED 24" ON CENTER SPACING. MINIMUM EDGE DISTANCE 3"

OPTION 2. GROUT FILLED CMU BLOCK 1/4" X 3" SELF TAPPING CONCRETE 1-1/2" EMBED ANCHORS 22" ON CENTER SPACING

VERTICAL JAMB STEEL FRAME CONST.

5/16" X 3/4" SELF TAPPING SCREWS MOUNT TRACK DIRECTLY TO 12 GAGE MIN. STEEL JAMBS. SPACING 24" ON CENTER. FIRST (BOTTOM) SCREW NO MORE THAN 6" FROM FLOOR.

THE DESIGN OF THE SUPPORTING STRUCTURAL ELEMENTS IS THE RESPONSIBILITY OF THE BUILDING ENGINEER OR ARCHITECT OF RECORD.

DESIGN ENGINEER: MARK WESTERFIELD, P.E. FLORIDA P.E. #48495, NC P.E. #23832, TEXAS P.E. #91513

NOTICE: Confidential/Proprietary information of CLOPAY BUILDING PRODUCTS CO. is contained herein and may not be disclosed, used, duplicated, made available, or distributed without its prior consent. Failure to observe this notice may result in liability for any damages and losses resulting therefrom.

Unless Stated Otherwise TOLERANCES are .0 = ±.031 .00 = ±.015 .000 = ±.005 .0000 = ±.001 Degrees = ±1/2"



Unless Stated Otherwise DIMENSIONS ARE IN INCHES.

Glopay Building Products Company 8585 Duke Boulevard Mason, OH 45040 USA Tel. No. 513-770-4800 Fax No. 513-770-4853

PART NO.: N/A CLOPAY WINDLOAD RATING W-1

DESCRIPTION: MODEL 3603W1 14' WIDE

DRAWN BY: RJK DATE: 8/25/03 SCALE: N/A DWG. B

CHECKED BY: SH DATE: 08/28/03 SHEET 1 OF 1

DWG. NO.: 102897 REV. NO. 01

4 | 3 | 2 | 1