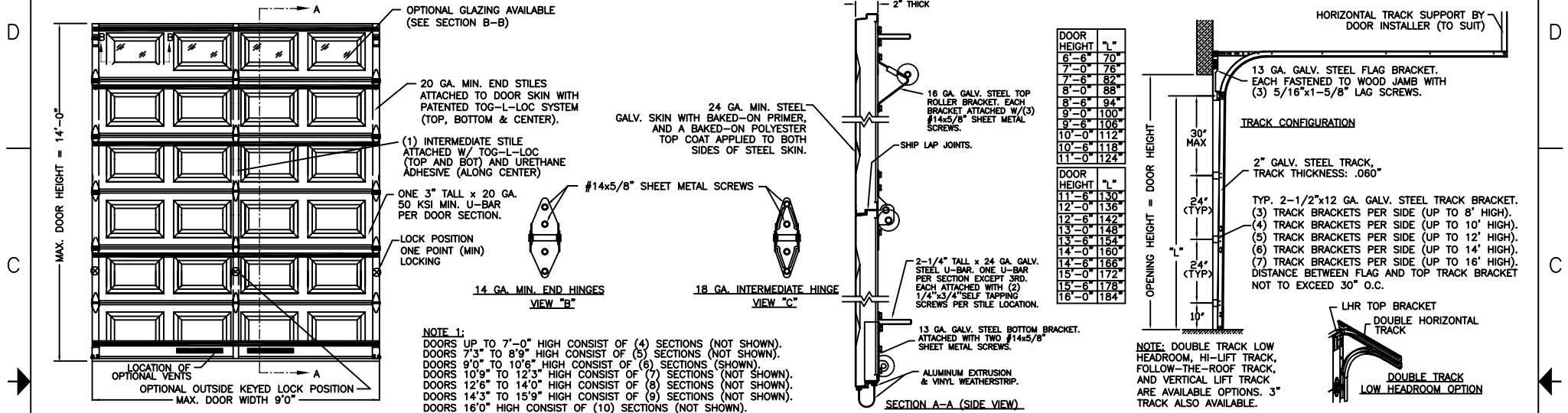


MODEL 692 (24 GA. STEEL SKIN, UNINSULATED)

MODEL 652V (24 GA. STEEL SKIN, POLYSTYRENE FOAM INSULATION W/ VINYL BACKER)

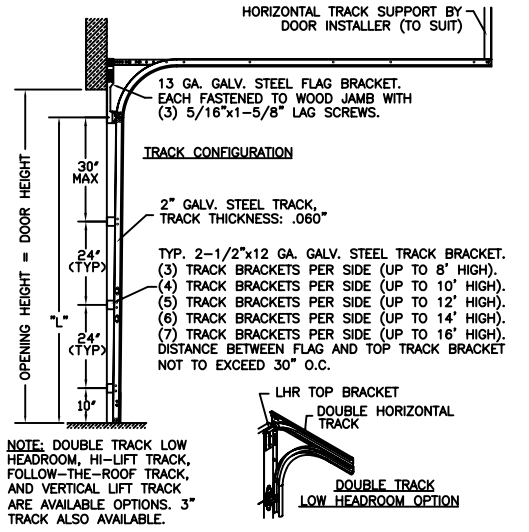
REVISIONS

REV. NO.	ZONE	DATE	ECN NO.	APPVD:	DESCRIPTION
00	-	11/03/03	ER1037	SH	INITIAL RELEASE
01	-	1/10/07	-	SH	DRAWING_CORRECTIONS

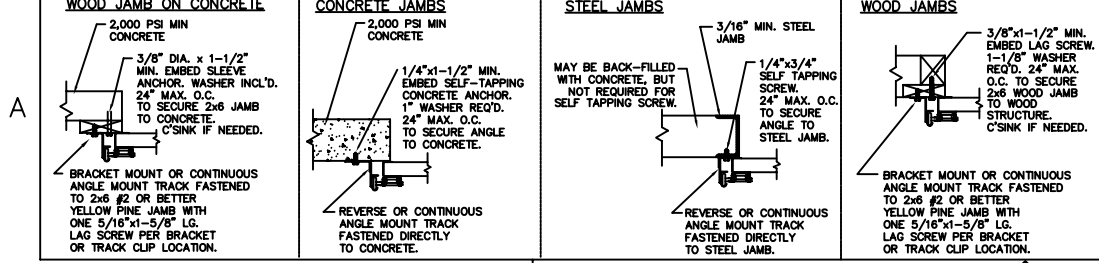
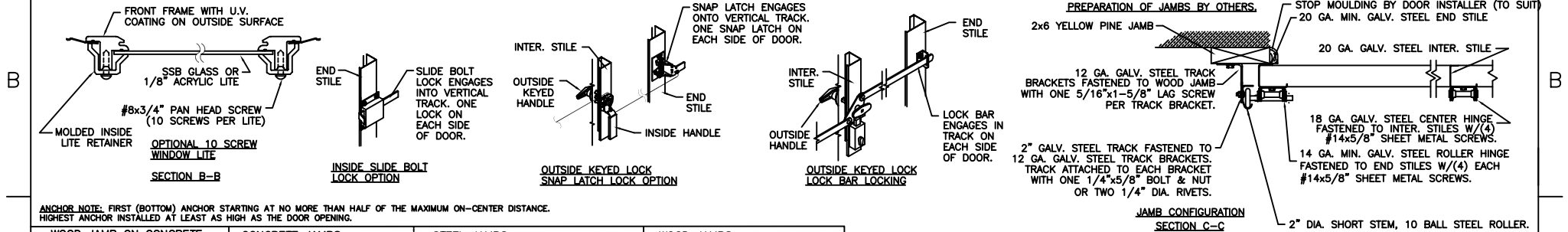


DOOR HEIGHT	"L"
6'-6"	70"
7'-0"	76"
7'-6"	82"
8'-0"	88"
8'-6"	94"
9'-0"	100"
9'-6"	106"
10'-0"	112"
10'-6"	118"
11'-0"	124"

DOOR HEIGHT	"L"
11'-6"	130"
12'-0"	136"
12'-6"	142"
13'-0"	148"
13'-6"	154"
14'-0"	160"
14'-6"	166"
15'-0"	172"
15'-6"	178"
16'-0"	184"



NOTE 1:
 DOORS UP TO 7'-0" HIGH CONSIST OF (4) SECTIONS (NOT SHOWN).
 DOORS 7'-3" TO 8'-9" HIGH CONSIST OF (5) SECTIONS (NOT SHOWN).
 DOORS 9'-0" TO 10'-8" HIGH CONSIST OF (6) SECTIONS (SHOWN).
 DOORS 10'-9" TO 12'-3" HIGH CONSIST OF (7) SECTIONS (NOT SHOWN).
 DOORS 12'-6" TO 14'-0" HIGH CONSIST OF (8) SECTIONS (NOT SHOWN).
 DOORS 14'-3" TO 15'-9" HIGH CONSIST OF (9) SECTIONS (NOT SHOWN).
 DOORS 16'-0" HIGH CONSIST OF (10) SECTIONS (NOT SHOWN).



THE DESIGN OF THE SUPPORTING STRUCTURAL ELEMENTS IS THE RESPONSIBILITY OF THE BUILDING ENGINEER OR

MARK WESTERFIELD, P.E.
 FLORIDA P.E. #48495, NC P.E. #23832,
 TEXAS P.E. #91513

DESIGN LOADS: +13.0 PSF & -15.0 PSF
 TEST LOADS: +19.5 PSF & -22.5 PSF

NOTE: Confidential/Proprietary information of CLOPAY BUILDING PRODUCTS CO. is contained herein and may not be disclosed, used, duplicated, made available, or distributed without the prior consent. Failure to observe this notice may result in liability for any damages and losses resulting therefrom.

Third Angle Projection

Unless Stated Otherwise TOLERANCES are:
 .0 = ±.03
 .00 = ±.015
 .000 = ±.005
 .0000 = ±.001
 Degrees = ±1/2°

8585 Duke Boulevard
 Mason, OH 45040
 Tel. No. 1-513-381-4800
 Fax No. 1-513-762-3519

Glopay
 Building Products Company

DESCRIPTION: 692W1 9'0"W

DRAWN BY: DAS DATE: 5/29/03 SCALE: NTS DWG. B
 CHECKED BY: DATE: SHEET 1 OF 1 SIZE B

DWG. NO.: 102894 REV. NO. 00

4

3

2

1

4

3

2

1