

"L" & "D" Snap-Latch Lock Assembly Instructions

IMPORTANT:

If your door is already attached to an automatic garage door opener and/or operational, be sure to disengage the opener and place a C-clamp in the track just above one of the rollers before beginning work. This will keep the door from moving while you are working on the lock. If your door is going to be equipped with an automatic garage door opener, make sure that the door is always unlocked when the operator is being used. This will avoid damage to the door.

Contents:

Steps L1-L2 for Hole Placement	p. 1
Steps L3-L6 for Single Set of "L" Handle Locks	p. 2
Steps L7-L8 for Nonworking Set of "L" Handle Locks	p. 2
Steps L9-L11 for Optional Escutcheon Plate	p. 3
Steps L12-L17 for Spring Latch, Striker Plate, and Lock Cable	p. 4

NOTE: If door is not yet installed, steps L1 through L11 should be performed while section #2 is on the sawhorses. The spring latches, striker plates and lock cables (Steps L12 through L16) are to be assembled after the door and track have been installed.

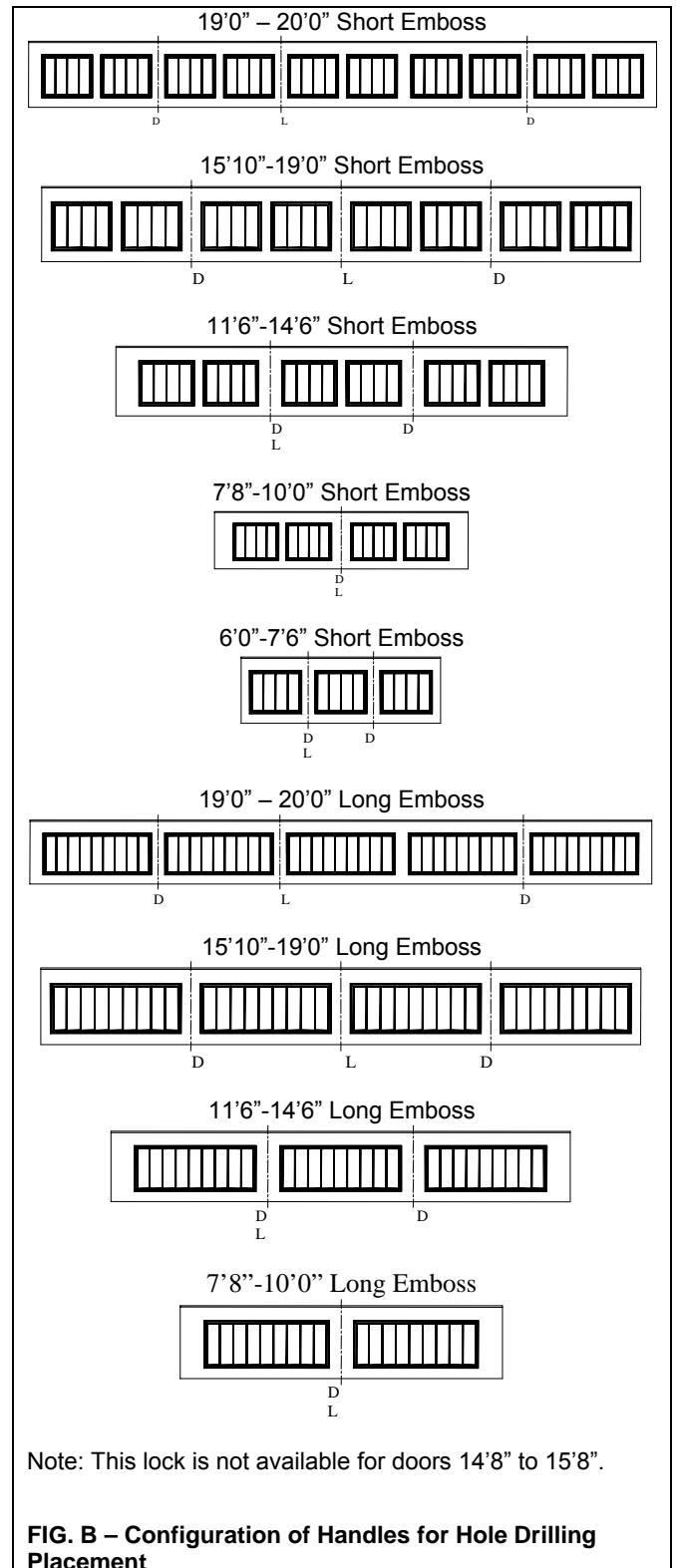
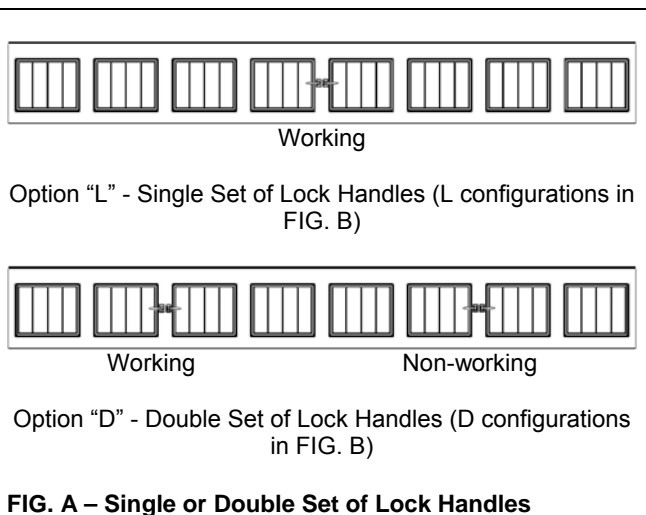
Hole Placement for Single Skin Steel Doors with "L" Handle Locks

NOTE: The working set of twisted "L" handles is always placed in the holes drilled farthest left when viewing the section from the outside. The locking handle of this set goes on the right side as shown in FIG. A.

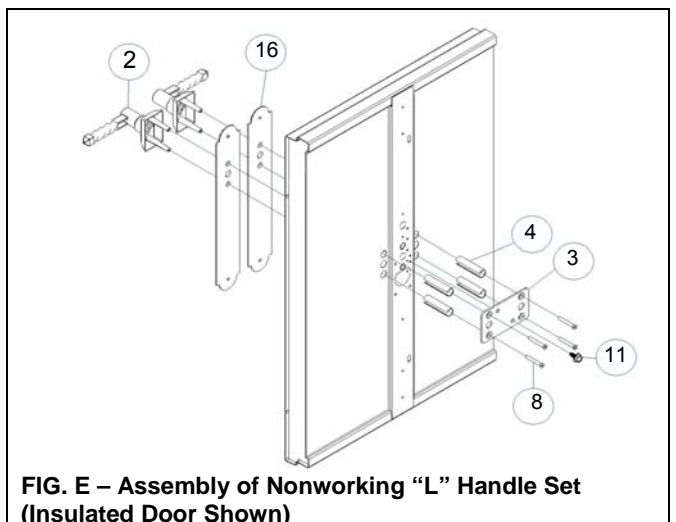
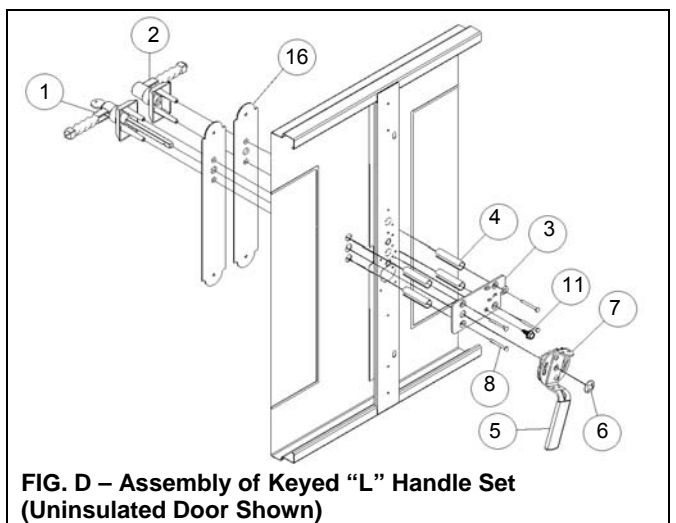
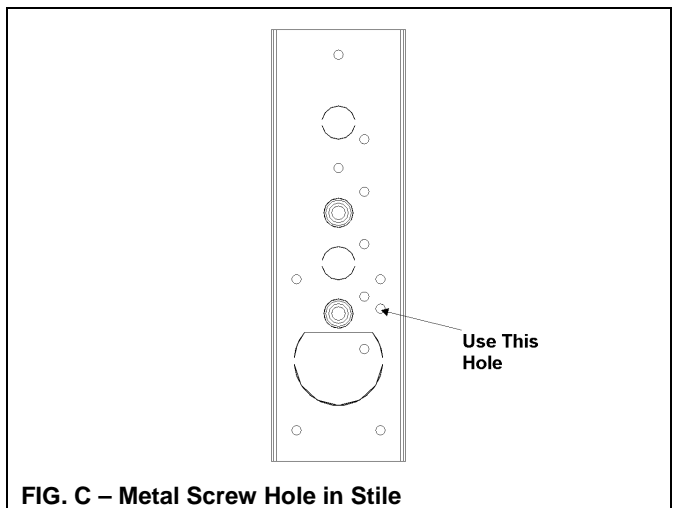
Step L1: If lock holes are already present in your door, proceed to Step L3.

Step L2: Locate your door in FIG. B for the placement of lock hole pattern. L's indicate the placement of single set of lock handles ("L" lock option). D's indicate the placement of double set of lock handles ("D" lock option). You must drill lock hole patterns according to the template provided in FIG. G on page 3 of this manual.

NOTE: All holes must be drilled from the outside through the door and insulation, if applicable, with a sharp drill bit to ensure a clean cut. Use care to prevent damaging the door.



PARTS LIST			
No.	Qty. "L" Lock Option	Qty. "D" Lock Option	Description
1	1	1	Outside Keyed Twisted "L" Handle
2	1	3	Outside Nonworking Twisted "L" Handle
3	1	2	Snap Latch Plate
4	4	8	Lock Spacers
5	1	1	Vinyl Sleeve
6	1	1	Lock Push Nut
7	1	1	Inside Release Handle
8	4	8	1-1/4" Phillips Head Screws
9	1	1	Lock Cable (To Be Cut)
10	6	6	1/4"-20x 5/8" Track Bolt
11	5	6	#14x 5/8" Sheet Metal Screw
12	2	2	Spring Latch
13	6	6	1/4" Hex Washer Head Nut
14	2	2	Striker Plate
15	2	2	Cable Stop (Pre-Attached)
16	2	4	Optional Escutcheon Plate
17	4	8	Optional #8x1/2" Black Pan Screw
18	4	8	Optional 1/2" Round Vinyl Cap



Installing Keyed Set of "L" Handle Locks

Step L3: From the inside of the door, attach the snap latch plate (3) to the stile with a #14x5/8" sheet metal screw(11). See FIG. C for which hole to use in the stile. (FIG. D)

Step L4: Slide the outside L-handles (1 & 2) through outside escutcheon plates (16) (if applicable), the holes in the section, the four lock spacers (4) and the secured snap latch plate (3). Attach with four 1-1/4" #2 Phillips machine screws (8). (FIG. D)

Step L5: Slide the inside release handle (7) over the shaft of the outside handle and secure in place using the push nut (6). Be sure the push nut is pressed firmly against the inside release handle. (FIG. D)

Step L6: Slide the vinyl sleeve (5) over the arm of the inside release handle. (FIG. D)

If you don't have a second set of "L" handles or escutcheon plates, return to Step 9 in the MANUAL and finish installing the door before proceeding to Step L12 of this supplement.

Installing Nonworking Set of "L" Handles

Step L7: From inside of the door, attach the snap latch plate (3) to the stile with a #14x5/8" sheet metal screw(11). See FIG. C for which hole to use in the stile. (FIG. E)

Step L8: Slide the outside L-handles (1 & 2) through outside escutcheon plates (16) (if applicable), the holes in the section, the four lock spacers (4), and the secured snap latch plate (3). Attach with four 1-1/4" #2 Phillips machine screws (8). (FIG. F)

If you do not have escutcheon plate return to Step 9 in the MANUAL and finish installing the door before proceeding to Step L12 of this supplement.

Installing the Optional Escutcheon Plate

Step L9: Drill two 1/8" holes into the section at each escutcheon plate hole.

Step L10: Take the 1/2" black pan screw and fasten one into each hole.

Step L11: On the inside of non-insulated doors, take a 1/2" round vinyl cap and place over each protruding screw tips.

Return to Step 9 in the MANUAL and finish installing the door before proceeding to Step L12 of this supplement.

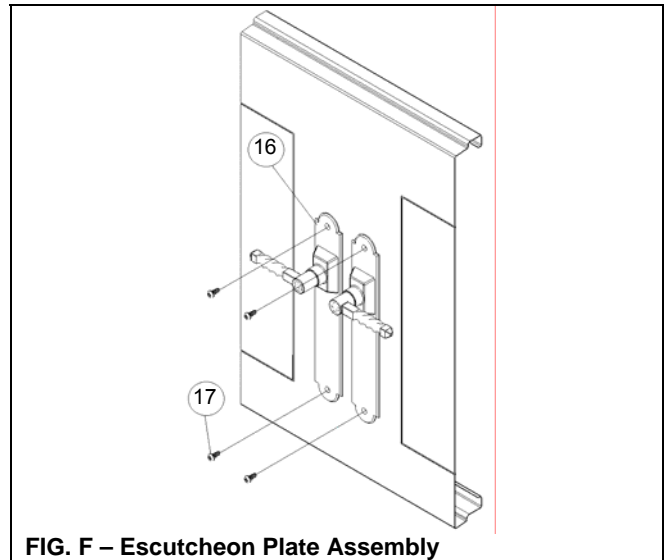


FIG. F – Escutcheon Plate Assembly

----- Cut Here -----

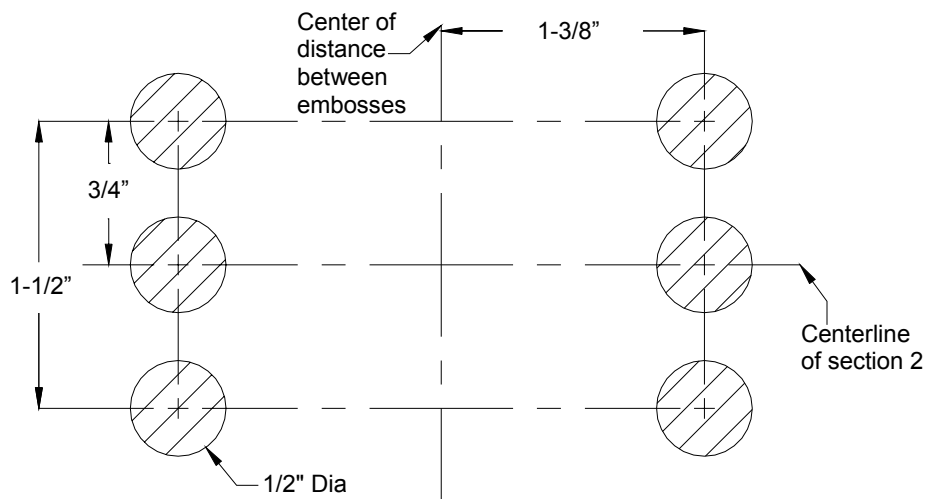


FIG. G - Template for drilling holes in section (Full Scale)

Installing Spring Latches, Striker Plates, and Lock Cables

NOTE: If attaching an automatic garage door opener, the striker plates and spring latches should not be installed.

Step L12: Once the door is completely assembled, attach the striker plate (14) to the track using two 1/4" x 5/8" track bolts (10) and two 1/4" hex washer head nuts (13). Insert bolts through the two 9/32" holes located top and bottom of the rectangular lock slot. Be sure the striker plate wraps around the back of the track as shown. Do not tighten. (FIG. H)

Step L13: Place the spring latch (12) on the end stile of the door section and align the spring latch with the striker and the holes in the stile. Secure using two #14 x 5/8" sheet metal screws (11). Make sure that the striker fits around the spring latch and secure in place. (FIG. H)

Step L14: If the lock is located in the center of the door width, cut the lock cable in half and go to Step L16. Otherwise, rotate the inside release handle counterclockwise until it stops. Measure from the top left hole in the handle to the end of the left spring latch. (FIG.H)

Step L15: Cut the cable according to the measurement obtained in Step L14.

Step L16: Thread the cable through the left hole in the top of the inside release handle from the underside until the stop button comes into contact with the handle. Extend the cable to the left spring latch and feed the end of the cable into the hole as shown, and secure in place with one 1/4" x 5/8" track bolt (10) and 1/4" nut (13). Be sure to pull cable taut before securing in place. (FIG. H)

Step L17: Repeat for other side using the remaining cable and the right hole on the lower part of the handle. (FIG. H)

NOTE: Key Blanks are available. Call the toll-free Consumer Services number located on the front of the MANUAL

Return to Step 13 in the MANUAL and complete installation of the door.

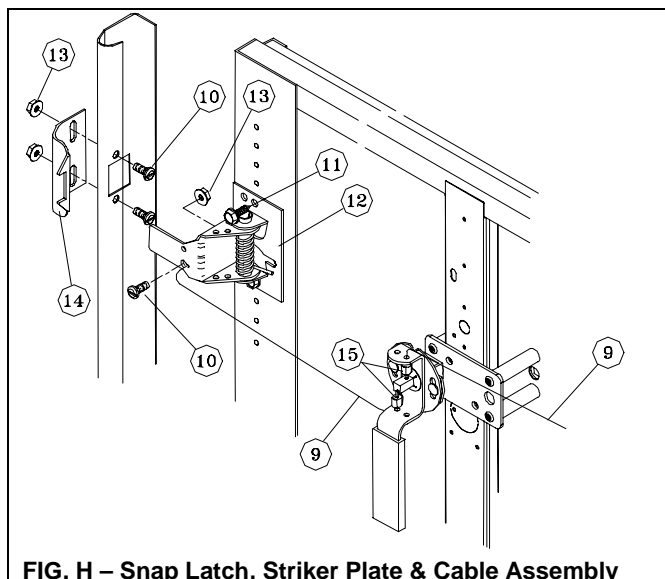


FIG. H – Snap Latch, Striker Plate & Cable Assembly